

HALTON LODGE

PLOT 6

Anvil Homes are delighted to launch this exclusive development of ten stunning individually designed detached family homes situated in a rural village setting within the heart of Northumberland.



Head Office: 01207 560 080 sales@anvilhomes.com www.anvilhomes.com

Disclaimer: Although every care has been taken to ensure the accuracy and illustration in this brochure, the contents do not form part of, or constitute, any representation, warranty or contract. Any fixtures and fittings shown in the floor plans are for illustration purposes only.

HALTON LODGE

ANVIL
HOMES



HALTON LODGE

Pleasantly situated close to the entrance of this superb development, a timber gated entrance leads onto a spacious gravel driveway towards the detached double garage. Stone flagged pathways lead you to the entrance and around the property with its stunning landscaped gardens mainly laid to lawn with patio seating areas.



Double fronted detached house leading into a central entrance hall incorporating a feature staircase leading to the first floor with useful under stairs cupboard.

The hallway leads into three reception rooms including a study with a front aspect conveniently situated just inside the front entrance. A spacious lounge again with a front aspect and a fabulous feature fireplace housing a multi fuel stove and a fantastic formal dining room for those special occasions with family and friends.

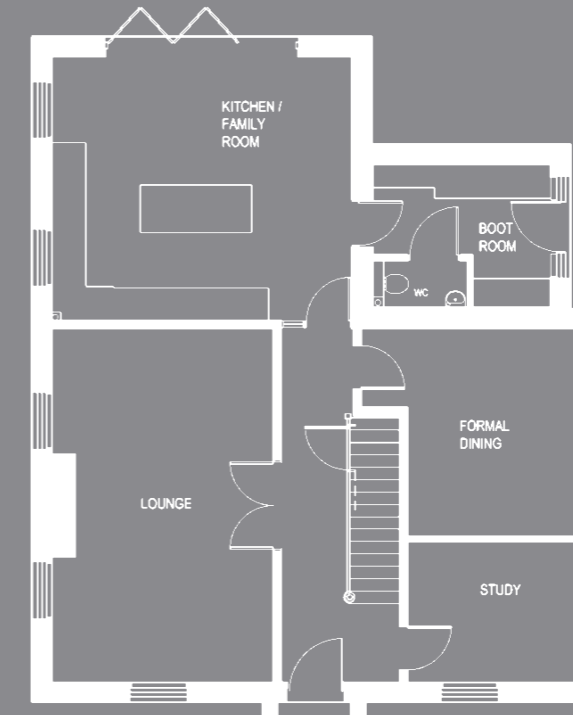
At the far end of the hall a glazed door leads through to the kitchen/ family room with stunning bi-folding doors leading out to the landscaped gardens providing lots of natural light. The kitchen is exactly what you would expect from a house of this scale and importance and exudes quality with bespoke handmade painted furniture,

integrated appliances, a central island, granite work surfaces and tiled flooring.

Accessed via the kitchen is a useful and good sized utility room/ boot room incorporating a cloakroom with WC with an external door leading out to the side of the property.

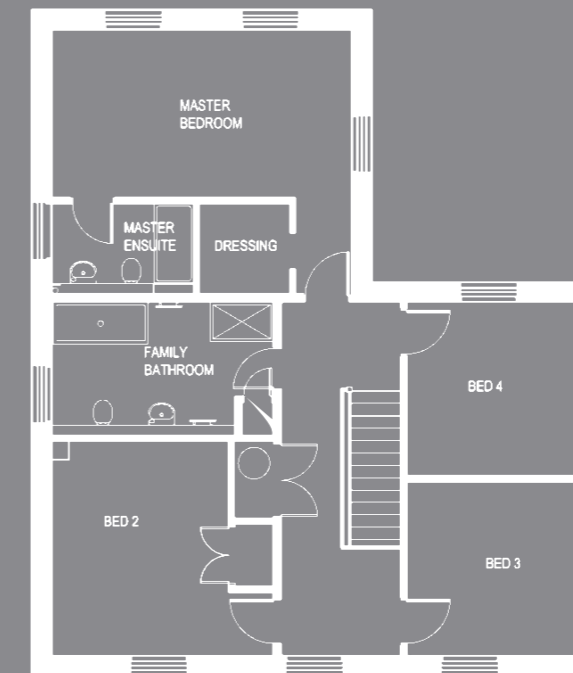
The first floor includes a spacious master suite with a dressing room and an ensuite shower room comprising of a walk in shower and contemporary fittings. There are a further three double bedrooms along with a spacious and stylish family bathroom which includes both a bath and separate walk in shower.

Floor Plan



Ground Floor

Kitchen	5703 x 5025 - 18'8" x 16'5"
Boot Room	2730 x 3375 - 8'11" x 11'
Lounge	4213 x 6715 - 13'9" x 22'
Formal Dining	3215 x 3940 - 10'6" x 12'11"
Study	3215 x 2675 - 10'6" x 8'9"



First Floor

Master Bedroom	5703 x 3201 - 18'8" x 10'6"
Ensuite	2700 x 1724 - 8'10" x 5'7"
Dressing	1725 x 1724 - 5'7" x 5'7"
Bedroom 2	3363 x 4075 - 11' x 13'4"
Bedroom 3	3240 x 3307 - 10'7" x 10'10"
Bedroom 4	3240 x 3307 - 10'7" x 10'10"
Family Bathroom	4213 x 2540 - 13'9" x 8'4"